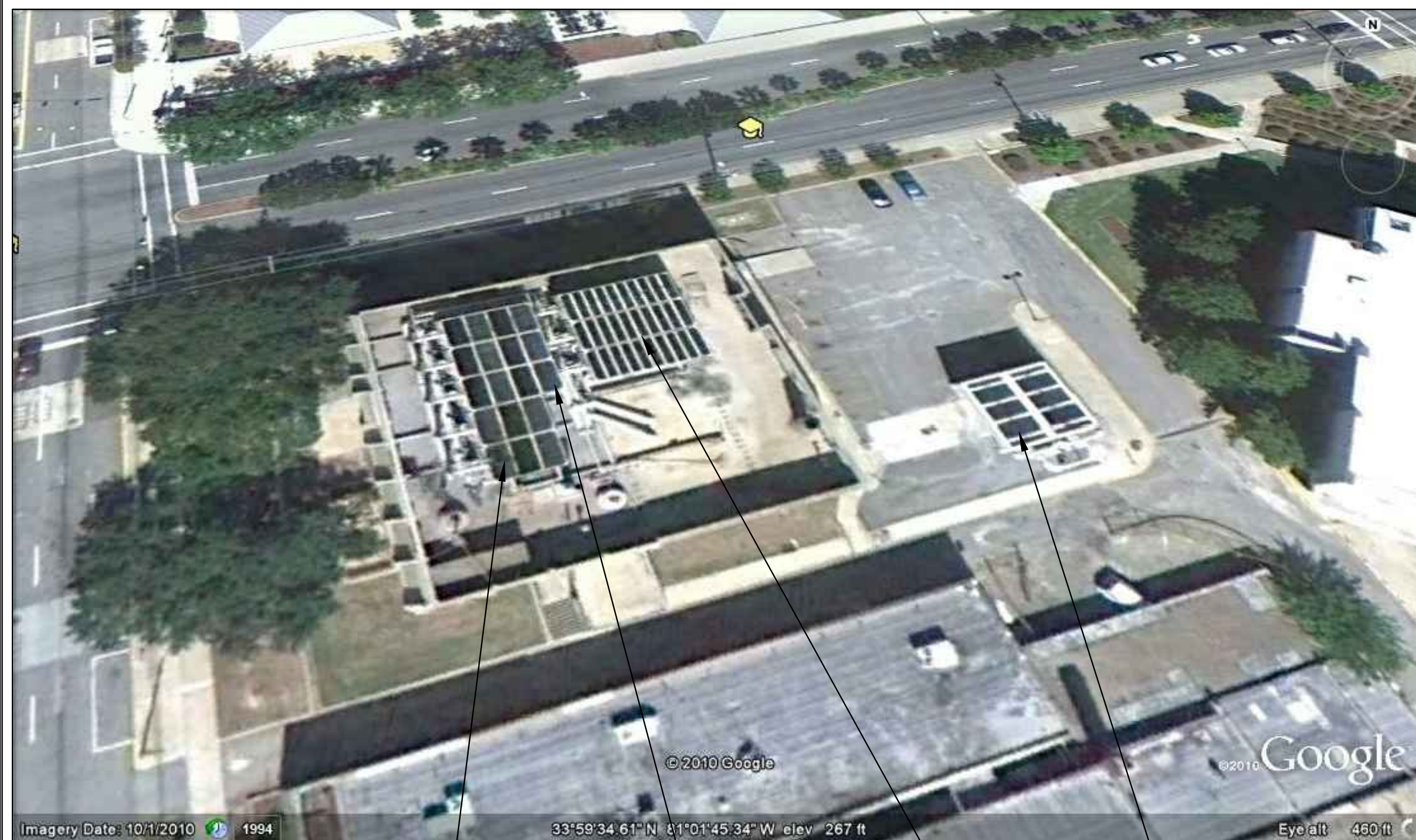


EAST ENERGY PLANT

NO SCALE

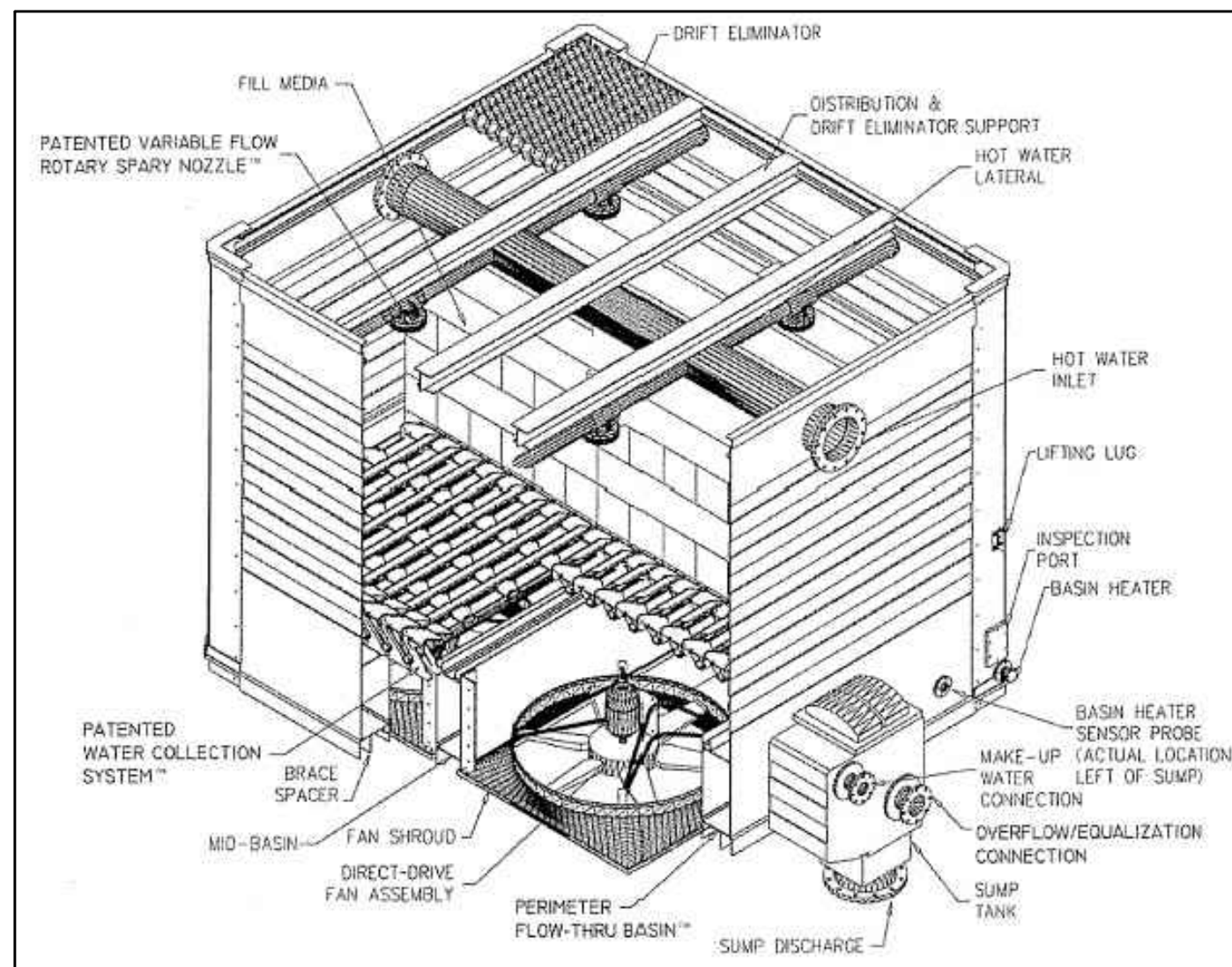
FOUR COOLING TOWERS ON ROOF.



WEST ENERGY PLANT

NO SCALE

TWO COOLING TOWERS ON ROOF. THREE COOLING TOWERS ON ROOF. THREE COOLING TOWERS ON ROOF. TWO COOLING TOWERS ON GROUND.



TOWER TECH COOLING TOWER SCHEMATIC

NO SCALE

NOTES:

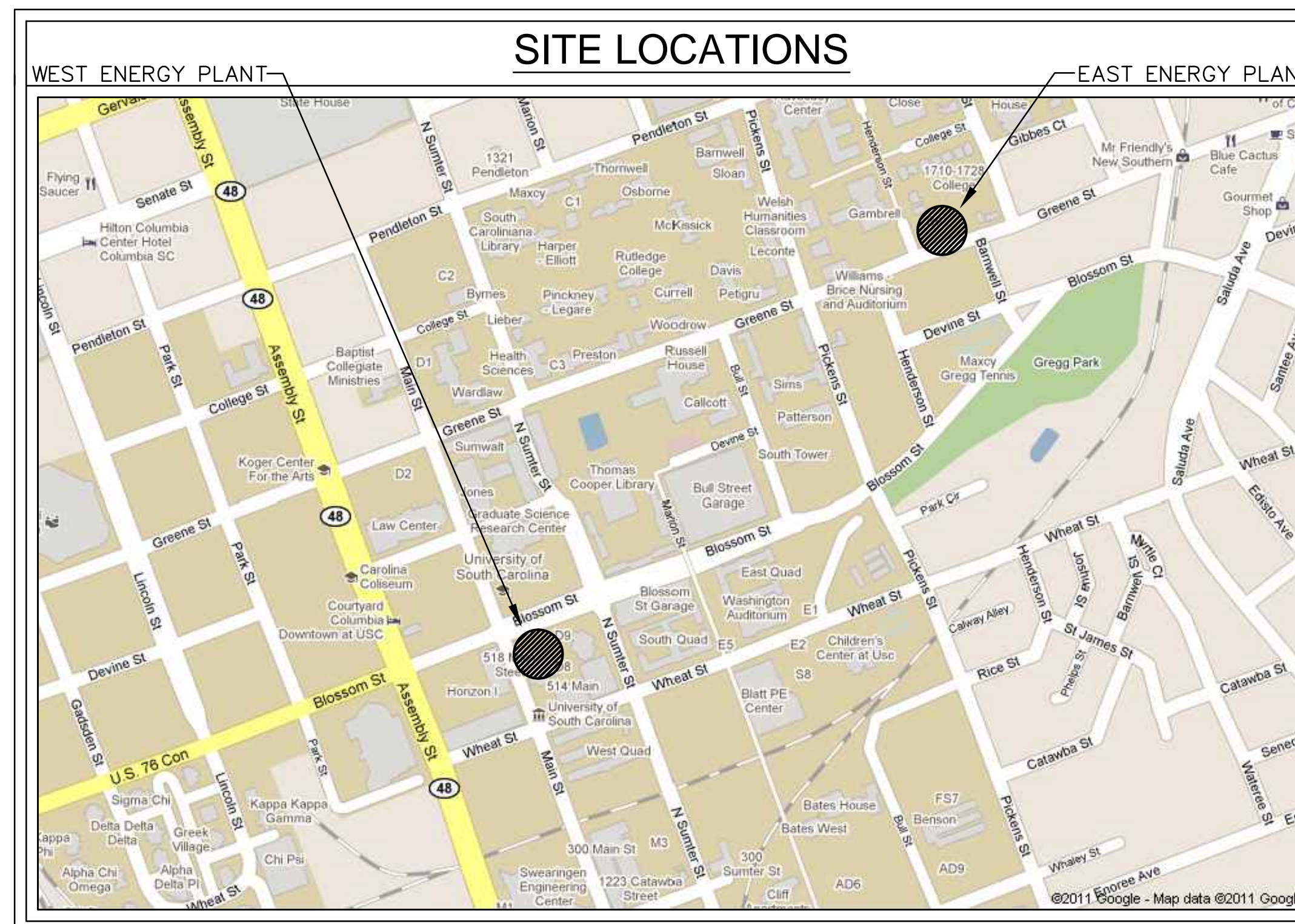
1. THERE ARE A TOTAL OF 14 COOLING TOWERS ON SITE. 12 LOCATIONS ON THE ROOF OF THE ENERGY PLANTS AND 2 ON THE GROUND IN THE PARKING LOT. SEE PICTURE TO LEFT. ALL TOWERS ARE MANUFACTURED BY TOWER TECH.
- 2A. (WEST) ROOF MOUNTED COOLING TOWERS.
 - TMT-216-319, SIX FAN UNIT, 600 NOMINAL TONS. MANUFACTURED IN 1997, TOTAL OF 2 TOWERS.
 - TMT-288-319, EIGHT FAN UNIT, 800 NOMINAL TONS. MANUFACTURED IN 1997, TOTAL OF 3 TOWERS.
 - TTXE-360-319, TEN FAN UNIT, 1000 NOMINAL TONS. MANUFACTURED IN 2004, TOTAL OF 3 TOWERS.
- 2B. (EAST) ROOF MOUNTED COOLING TOWERS.
 - TMT-288-319, EIGHT FAN UNIT, 800 NOMINAL TONS. MANUFACTURED IN 1997, TOTAL OF 4 TOWERS.
3. (WEST) GROUND MOUNTED COOLING TOWERS.
 - TTF-288-319, EIGHT FAN UNIT, 800 NOMINAL TONS. MANUFACTURED IN 1999, TOTAL OF 2 TOWERS.
4. SCOPE OF WORK IS DESCRIBED IN THE TOWER REPAIRS REQUIRED. SOME REPAIRS MAY NOT BE KNOWN UNTIL PORTIONS OF THE WORK ARE REMOVED. UNCOVERED REPAIRS ARE TO BE BROUGHT TO THE ATTENTION OF THE OWNER AND A DECISION AT THAT TIME SHALL BE MADE WHETHER TO REPLACE THE PART OR, IF POSSIBLE, REPAIR AND REINSTALL. CONTRACTOR SHALL MAKE NO ASSUMPTIONS WITHOUT DISCUSSING WITH OWNER.

SCOPE OF WORK REQUIRED FOR EACH TOWER

1. REPLACE DRIFT ELIMINATORS.
2. REPLACE FILL MEDIA IN EACH TOWER CELL.
3. REPLACE ROTARY NOZZLES.
4. INSPECT CONDITION OF INTERIOR WALL SEALANT. REPLACE/REPAIR AS NEEDED FOR EACH TOWER.
5. REMOVE FAN SHROUD SCREENS. CLEAN AND CHECK FOR DAMAGE. REATTACH SCREENS.
6. REMOVE FAN BLADE ASSEMBLIES. CLEAN AND CHECK FOR BLADE/HUB DAMAGE. REATTACH ASSEMBLIES.
7. CLEAN FAN SHROUDS OF DEBRIS.
8. REMOVE COLLECTOR BAFFLES. CLEAN AND INSPECT FOR DAMAGE. REATTACH BAFFLES.
9. CLEAN UNDERSIDE OF ALL COLLECTOR GRIDS, BAFFLES, AND DRIP TRAYS.
10. INSTALL BOTTOM CLEANOUT PORTS IN ACCESS BASIN. FLUSH SOLIDS AND DEBRIS FROM ALL BASIN AND SUMP CAVITIES.
11. SERVICE AND GREASE FAN MOTORS.
12. REINSTALL ALL TOWER COMPONENTS AND CIRCULATE WATER TO FLUSH TOWERS. FILTER ALL DEBRIS AT PUMP SCREEN.
13. TEST EACH TOWER FOR LEAKS.
14. PROVIDE COMPLETION AND INSPECTION REPORT. REPORT SHALL INCLUDE REPLACEMENT PARTS LIST WITH MODEL NUMBERS.
15. PROPERLY DISPOSE OF ALL REPLACE MATERIAL.
16. CONTRACTOR RESPONSIBLE FOR ALL RECEIVING OF NEW MATERIALS, INSTALLATION, AND RIGGING (INCLUDING ANY NECESSARY CRANES, ETC.).
17. PULL ALL CONDENSOR WATER STRAINERS AND CLEAN. RUN REPAIRED TOWERS FOR ONE WEEK AND PULL/CLEAN STRAINERS AGAIN.

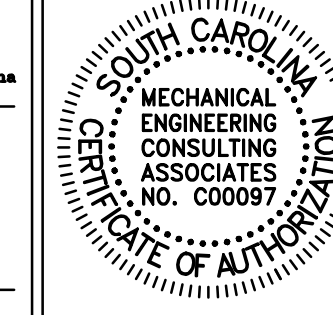
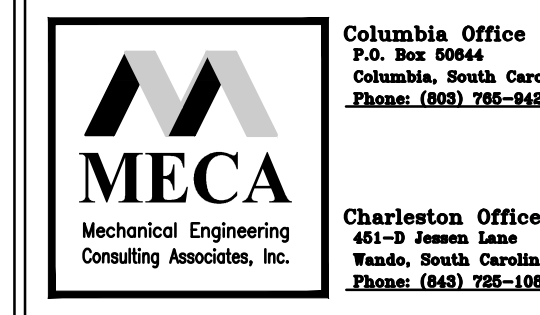
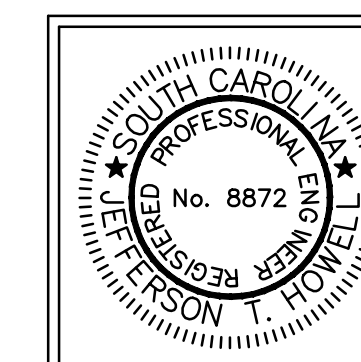
SPECIFICATIONS:

1. DRIFT ELIMINATORS - ACCU-PAC MODEL CF-150MAX HIGH EFFICIENCY CELLULAR DRIFT ELIMINATOR AS MANUFACTURED BY BRENTWOOD INDUSTRIES, READING, PA. 610-236-1100
2. FILL MEDIA - MODEL CF-1900 FILL MEDIA, PVC, 19mm, FLUTE SIZE, CROSS-FLUTED DESIGN, 10 MIL THICKNESS, AS MANUFACTURED BY BRENTWOOD INDUSTRIES, READING PA. 610-236-1100
3. SPRAY NOZZLES - FOR TOWER MODELS TMT AND TTF, USE TOWER TECH, INC. UPGRADED VARIABLE-FLOW ROTARY SPRAY NOZZLES, MODEL RSN-HPT. FOR TOWER MODEL TTXE, USE TOWER TECH, INC. STANDARD VARIABLE-FLOW ROTARY SPRAY NOZZLES. CONTACT TOWER TECH, INC. CUSTOMER SERVICE. 405-290-7788.
4. MISCELLANEOUS PARTS - CONTACT TOWER TECH, INC. CUSTOMER SERVICE FOR ASSISTANCE. 405-290-7788 OR www.towertechinc.com



TOWERS TO BE REPAIRED:

- WEST ENERGY PLANT: THREE (3) 10 CELL TOWERS - ON ROOF
 TWO (2) 8 CELL TOWERS - ON GROUND
- EAST ENERGY PLANT: TWO (2) 8 CELL TOWERS - ON ROOF
- TOWERS NOT LISTED HAVE BEEN PREVIOUSLY REPAIRED.



JOB No. 110213
 DESIGNED 02/01/2011
 DRAWN MIT
 APPROVED JTH
 SHEET No. 1 OF 2

PLOT DATE: 11/02/2011
 SHEET: M100
 1 OF 2
 SHEET IN SET: 1 OF 1

PROJECT TITLE: ENERGY SERVICES TOWER TECH COOLING TOWER PROJECT

DRAWING:	DATE:	DESCRIPTION:	DRAWN BY:	CHECKED BY:	SEAL:
CP00291063	01 FEB 11				

University of South Carolina
COLUMBIA, SC 29208

University of South Carolina